

**Aldreds**  
Estate Agents

64 Albemarle Road

Gorleston, Great Yarmouth, NR31 7AS

£180,000





## 64 Albemarle Road

Gorleston, Great Yarmouth, NR31 7AS

A hall entrance, three bedroom mid terrace house with all bedrooms leading separately off the landing sitting on the popular Albemarle Road. The property also has a good size lounge/dining room, kitchen and ground floor bathroom. Gas central heating and sealed unit double glazing. Outside there is a front forecourt and rear garden. Offered with no upward chain

### Entrance Hall

Door to front, stairs rising to landing, radiator.

### Lounge/Diner

23'6" x 10'5" max (7.17 x 3.2 max)

Bay double glazed window to front aspect, double glazed window to rear aspect, understairs cupboard, radiator.

### Kitchen

8'0" x 8'0" (2.46 x 2.44)

Base and wall mounted storage units with roll top work surfaces over, gas cooker point, double glazed window to side aspect, stainless steel sink and drainer, part tiled walls, plumbing for washing machine.

### Lobby

Wall mounted gas boiler, door to side, radiator, door to:-

### Bathroom

8'0" x 5'2" (2.46 x 1.6)

Panel bath with shower over, pedestal hand wash basin, low level WC, tiled walls, tiled floor, opaque double glazed window to rear aspect, heated towel rail.

### Landing

All bedrooms leading separately off:-

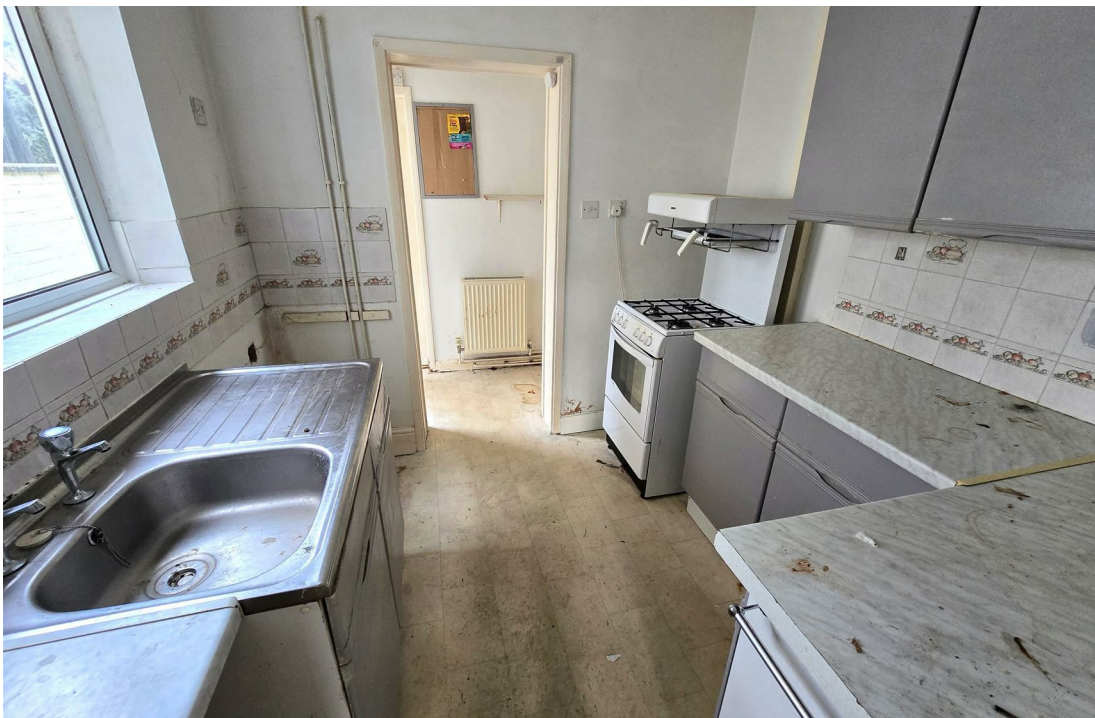
### Bedroom 1

11'9" x 11'1" plus wardrobe (3.6 x 3.4 plus wardrobe)

Fitted wardrobes, double glazed window to front aspect, radiator.







### Bedroom 2

12'1" x 8'2" (3.7 x 2.5)

Double glazed window to rear aspect, radiator.

### Bedroom 3

8'2" x 8'0" (2.5 x 2.44)

Double glazed window to rear aspect, radiator.

### Outside

To the front of the property there is a paved forecourt. To the rear of the property there is a well presented lawned garden, paved patio area surrounded by flower beds and borders containing bushes, shrubs and plants, timber shed.

### Tenure

Freehold

### Services

Mains gas, electricity, drainage, water

### Council Tax

Band B

### Location

Gorleston-on-Sea is a coastal town 2 miles from Great Yarmouth centre and has a varied selection of local shops \* Golf Course \* Modern District hospital \* Schools for all ages \* Library \* Regular bus services to the main shopping areas and a sandy beach.

### Directions

From the Gorleston office head south along the High Street, continue over the traffic lights into Lowestoft Road, turn right into Albemarle Road where the property can be found on the right hand side.

Ref G18434/01/26



Floor Plan



Viewing

Please contact our Aldreds Gorleston Office on 01493 664600 if you wish to arrange a viewing appointment for this property or require further information.

**Disclaimer**  
These particulars are issued on an understanding that all negotiations shall be conducted through Messrs. Aldreds. Please note: Messrs. Aldreds for themselves and for the vendors or lessors of this property whose agents they are given notice that: 1. Particulars are set out as a general outline only for guidance of intending purchasers or lessees, and do not constitute nor constitute part of, an offer or contract. 2. All descriptions, dimensions, references to condition and necessary permissions for use and occupation, and other details are given without responsibility and any intending purchasers or tenants should not rely on them as statements or representations of fact but must satisfy themselves by inspection or otherwise as to the correctness of each of them. 3. No person in the employment of Messrs. Aldreds has any authority to make or give any representation or warranty whatever in relation to this property. 4. If you are proposing to visit the property and are travelling some distance please check with Aldreds on the issue of availability prior to travelling. 5. Aldreds Property Consultants and associated services may offer additional services to the prospective purchaser for which they will be entitled to receive a commission. Aldreds are pleased to be working with Mortgage Advice Bureau. They're an award-winning mortgage broker with over 1,400 advisers across the UK, and have access to over 12,000 mortgage products from over 90 lenders. Aldreds Estate Agents Ltd receive a commission of £200 on each completed case. Your home may be repossessed if you do not keep up repayments on your mortgage. There may be a fee for mortgage advice. The actual amount you pay will depend upon your circumstances. The fee is up to 1%, but a typical fee is 0.3% of the amount borrowed. Mortgage Advice Bureau is a trading name of Mortgage Seeker Limited which is an appointed representative of Mortgage Advice Bureau Limited and Mortgage Advice Bureau (Derby) Limited which are authorised and regulated by the Financial Conduct Authority. Mortgage Seeker Limited Registered Office: Lovewell Blake, Sixty Six North Quay, Great Yarmouth, Norfolk, NR30 1HE. Registered in England Number: 03721415. 6. Potential purchasers should check with their providers that the broadband and mobile phone coverage they would require is available.

Area Map



Energy Efficiency Graph

